



ECO-VALVE

Figure # 207AB

Low Lead Brass Solder End Gate Valve

Product Features

- 125# WSP / 200# WOG
- Brass Body
- Solid Disc
- Solder Ends
- Screw Over Bonnet
- Non-Rising Stem
- AB1953 Certified

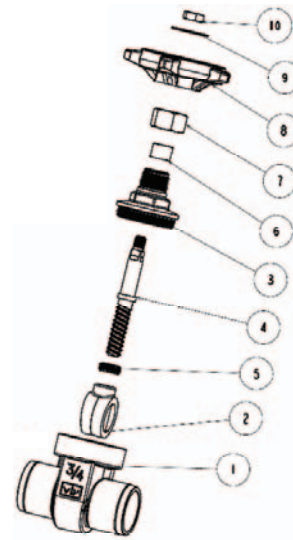


Certified to
ANSI/NSF 61



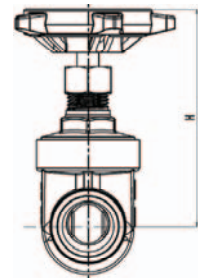
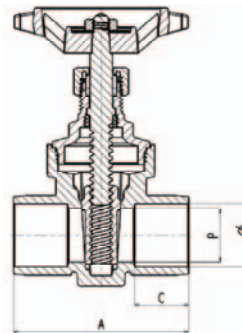
Materials & Specifications

Item	Description	Material	Specification
1	Body	Low Lead Brass	CW510L
2	Wedge	Low Lead Brass	CW510L
3	Bonnet	Low Lead Brass	CW510L
4	Stem	Low Lead Brass	CW510L
5	Ring	Low Lead Brass	CW510L
6	Packing ring	Graphite	WRAS approved
7	Packing nut	Brass	BS2874 CZ122
8	Handwheel	Aluminum	B85
9	Disc	Aluminum	B85
10	Nut	Zinc Plated Steel	A36



Dimensions, Weights (inches-lbs.) & Valve Data

Size	1/2	3/4	1	1-1/4	1-1/2	2
∅	15.92-16.02	22.27-22.37	28.65-28.75	35.00-35.10	41.35-41.47	54.05-54.17
A	1.97	2.12	2.44	2.75	2.84	3.23
C	0.65	0.65	0.78	0.86	0.86	0.86
H	2.79	3.17	3.93	4.37	4.94	6.27
L	2.51	2.51	2.99	3.54	3.54	4.13
P	0.51	0.74	1.00	1.25	1.50	2.00
Cv	10.8	23.0	42.0	72.0	120.0	210.0
Wt	0.53	0.82	1.17	1.83	2.38	4.03



RED-WHITE VALVE CORP.

20600 Regency Lane, Lake Forest, CA 92630

TEL: 949.859.1010 • FAX: 949.859.7200 • www.redwhitevalvecorp.com